

4nd Trans-national Workshop
EV3 - St. James Way Projekt
8th of December, 2011, Brussels
Summary - Germany

Dr. Wolfgang Richter
ADFC-Bundesverband e.V.

This project is co-financed by the European Union
under the preparatory action "Sustainable Tourism".



The sole responsibility of this publication lies with the author.
The European Commission is not responsible for any use
that may be made of the information contained therein.



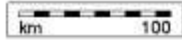
adfc

Allgemeiner Deutscher
Fahrrad-Club

Sections in Germany

EuroVelo 3 - St. James way						
Sections	No.	from	to	km	km high traffic	km not asph.
Section	1.1.	Flensburg	Rendsburg	95,5	5,0	6,0
Section	1.2.	Rendsburg	Itzehoe	68,7	2,0	5,7
Section	1.3.	Itzehoe	Wedel	69,8	2,0	5,0
Section	2.1.	Wedel	Hamburg-Rothenburgsort	24,0	1,0	0,0
Section	3.1.	Hamburg-Rothenburgsort	Zeven	83,5	0,0	9,5
Section	3.2.	Zeven	Bremen (CS)	62,8	1,0	5,8
Section	4.1.	Bremen (CS)	Diepholz	87,3	3,0	5,0
Section	4.2.	Diepholz	Osnabrück (CS)	62,0	2,0	7,0
Section	5.1.	Osnabrück (CS)	northwest Bad Iburg	25,6	0,6	2,0
Section	6.1.	northwest Bad Iburg	Münster (YH)	60,2	1,0	12,0
Section	6.2.	Münster (YH)	Haltern am See	80,6	6,0	8,0
Section	6.3.	Haltern am See	Wesel	52,5	1,2	5,0
Section	6.4.	Wesel	Düsseldorf	70,4	5,0	6,0
Section	6.5.	Düsseldorf	Köln	48,2	4,0	3,0
Section	6.6.	Köln	Bonn-Mehlem	49,4	0,4	0,0
Section	6.7.	Bonn-Mehlem	Heimbach	63,9	0,0	3,9
Section	6.8.	Heimbach	Aachen (Cathedral)	60,0	4,0	6,0
complete				1064,4	38,2	89,9

St. James Way in Germany



(Länge: 12° 46' 22.00", Breite: 53° 49' 25.35", 0 m üNN)

Detaildaten fehlen

This project is co-financed by the European Union
under the preparatory action "Sustainable Tourism".



The sole responsibility of this publication lies with the author.
The European Commission is not responsible for any use
that may be made of the information contained therein.



www.adfc.eu

EuroVelo 3 – St. James-Route in Germany

5 federal states are involved:

National workshops in:

Bremen 17/08/2011

for stakeholders in Lower Saxony and Bremen

Rendsburg 25/08/2011

for stakeholders in Schleswig-Holstein and Hamburg

Düsseldorf 15/09/2011

for stakeholders in North Rhine-Westphalia

Different number of members in workshops
(holidays in Germany June – September)

Existing route infrastructure – cycle paths or public roads (1)

- mostly on separated cycle way, agricultured road or public road with low motorized traffic
- good surface



Cycle way near Xanten – Rhine-cycle route



Cycle way in the region of Münster

This project is co-financed by the European Union under the preparatory action "Sustainable Tourism".

The sole responsibility of this publication lies with the author. The European Commission is not responsible for any use that may be made of the information contained therein.



Existing route infrastructure – cycle paths or public roads (2)



Hamburg – old warehouses



Cycle way Hamburg

This project is co-financed by the European Union
under the preparatory action "Sustainable Tourism".



The sole responsibility of this publication lies with the author.
The European Commission is not responsible for any use
that may be made of the information contained therein.

Existing route infrastructure – other paths

- short sections with bad quality of width and surface (Hamburg – Bremen)



Small path in a nature reservat



Not allowed way for cyclists!?

This project is co-financed by the European Union
under the preparatory action "Sustainable Tourism".

The sole responsibility of this publication lies with the author.
The European Commission is not responsible for any use
that may be made of the information contained therein.



Existing route infrastructure - signposting

- St. James Way runs on existing, regional, signed long distance cycle routes



Long distance cycle route HH – HB signposting in Bremen



Long distance cycle route German network D-7 and D-8 in Cologne

New signs for the Rhine-Route!

This project is co-financed by the European Union under the preparatory action "Sustainable Tourism".



The sole responsibility of this publication lies with the author. The European Commission is not responsible for any use that may be made of the information contained therein.

Existing service – accommodation / bed+bike

- great number of different accommodations (2 – 4 star hotels, youth hostels)



cycle-friendly accommodation



Youth hostel – bed+bike member

This project is co-financed by the European Union under the preparatory action "Sustainable Tourism".



The sole responsibility of this publication lies with the author. The European Commission is not responsible for any use that may be made of the information contained therein.

Existing service – rest stations / bike rental



Rest station with milk products – „melkhus“



Bike rental

Main attractions

Only less attraction (highlights to theme pilgrims – St. James) – but other one!



Ferry across the North- Baltic Sea Canal



Cathedral of Cologne at night

Promotion - Websites

- for each regional long distance cycle route you can find websites:

-> Oxen-Way: <http://www.sh-tourismus.de/de/1efbaba1-0f46-9412-8b27-c8adc63c0a0b.html> (German + English + Danish)

-> Elbe-Cycle route: <http://www.elbe-cycle-route.com/start.html> (German + English)

-> Long distance cycle route Hamburg – Bremen:

<http://www.radfernweg-hamburg-bremen.de/navigation/english-version.html> (German + English)

-> Bridges cycle route: <http://www.brueckenradweg.de/> (German)

-> North-Rhine Westphalia you get informations in english http://www.radroutenplaner.nrw.de/RRP_home_02_en.html

(NRW Tourism link to www.radroutenplaner.nrw.de)

This project is co-financed by the European Union
under the preparatory action "Sustainable Tourism".

The sole responsibility of this publication lies with the author.
The European Commission is not responsible for any use
that may be made of the information contained therein.



www.adfc.de

Situation for the development of EuroVelo 3 in Germany

- development of EuroVelo 3 in Germany is no problem of missing infrastructure
- the stakeholders think first regional, national and at last a little bit european
- the financing resources in the federal states of Germany are very different
good conditions for marketing – bad conditions for financing resources
- only a few „highligths“ to the theme „pilgrims“ in germany
- the name St. James Way is difficult, because the James Ways in Germany are ways for hiking – better Pilgrim route (Pilgeroute)!

This project is co-financed by the European Union
under the preparatory action "Sustainable Tourism".

The sole responsibility of this publication lies with the author.
The European Commission is not responsible for any use
that may be made of the information contained therein.



www.adfc.de